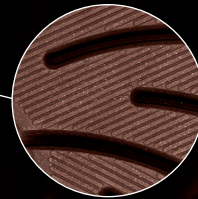
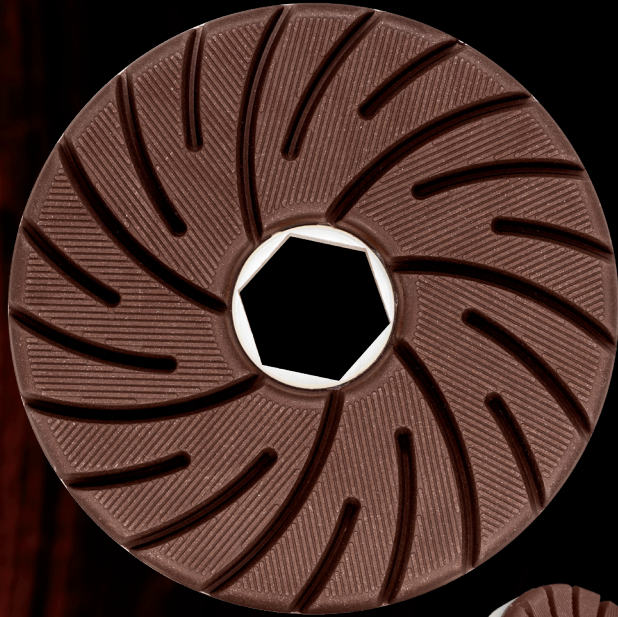


# CYCLONE COPPER EDGE WHEEL



**Save your resin wheel!** Transition bond from bridge saw to resin

**Increases polish speed by 40%**

**Aggressive copper hybrid bond easily trues out imperfect edges**

**Faster and longer lasting at over 10k linear feet @ 65"/min +**

**Copper hybrid bond turns into a resin bond for 1500 & 3000**

**Textured surface allows the diamond to open faster!**

**TOOLS: AUTO-EDGE MACHINE | MATERIALS: ENGINEERED STONE, GRANITE, MARBLE, QUARTZITE**

GRIT	5" ITEM #	6" ITEM #	FEED RATE	PRESSURE
30	CHW50030	CHW60030	65"/min	38 psi
50	CHW50050	CHW60050	65"/min	38 psi
100	CHW50100	CHW60100	65"/min	24 psi
200	CHW50200	CHW60200	65"/min	24 psi
400	CHW50400	CHW60400	65"/min	20 psi
800	CHW50800	CHW60800	65"/min	20 psi
1500	CHW51500	CHW61500	65"/min	20 psi
3000	CHW53000	CHW63000	65"/min	20 psi



**DIAMAXINC.COM**

1.888.449.0502

@DIAMAXINC

